



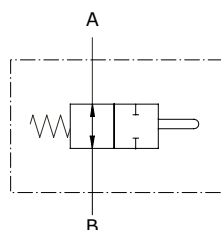
Type FC..A End stroke valves

- Normally open

Technical specifications and diagrams are measured with mineral oil of 46 cSt viscosity at 40°C (104°F) temperature.

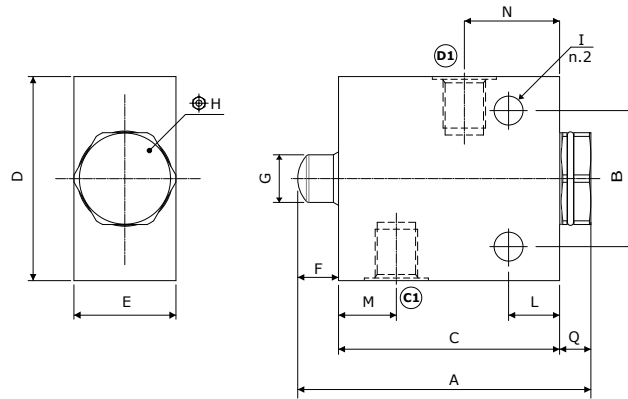
	FC02A	FC03A
Max. flow	30 l/min (7.9 US gpm)	60 l/min (15.9 US gpm)
Max. pressure	300 bar (4350 psi)	
Fluid	mineral based oil	
Max. stroke	7 mm (0.27 in)	7 mm (0.27 in)
Spring force	100 N (22.48 lbf)	
Viscosity	from 10 to 200 cSt	
Max. level of contamination	18/16/13 ISO4406	
Fluid temperature	with NBR seals from -30°C (-22°F) to 100°C (212°F)	
Environmental temperature for working conditions	from -40°C (-40°F) to 100°C (212°F)	
Weight	steel 0.75 kg (1.65 lb)	0.77 kg (1.70 lb)

NOTE - For different conditions, please contact Walvoil Sales Dpt.



Dimensions

FC02A - FC03A



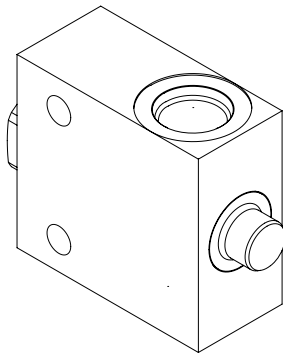
Valve type	(A)	(B)
FC02A	G3/8	
FC03A	G1/2	

Dimensions are in mm-in

Valve type	A	B	C	D	E	F	G	⊕H	I	L	M	N	Q
FC02A	86,2 3.39	40 1.57	65 2.56	60 2.36	30 1.18	12 0.47	14 0.55	27	8.5 0.33	15 0.59	17 0.67	28 1.1	9,2 0.36
FC03A	86,2 3.39	40 1.57	65 2.56	60 2.36	30 1.18	12 0.47	14 0.55	27	8.5 0.33	15 0.59	17 0.67	28 1.1	9,2 0.36

Ordering codes and description composition

FC 03 A
Port size



FC..A Complete valves

TYPE	CODE	DESCRIPTION
FC02A	1419822101	Steel body, G3/8 ports
FC03A	1419832100	Steel body, G1/2 ports

For SAE thread, please contact our Sales Dpt.