



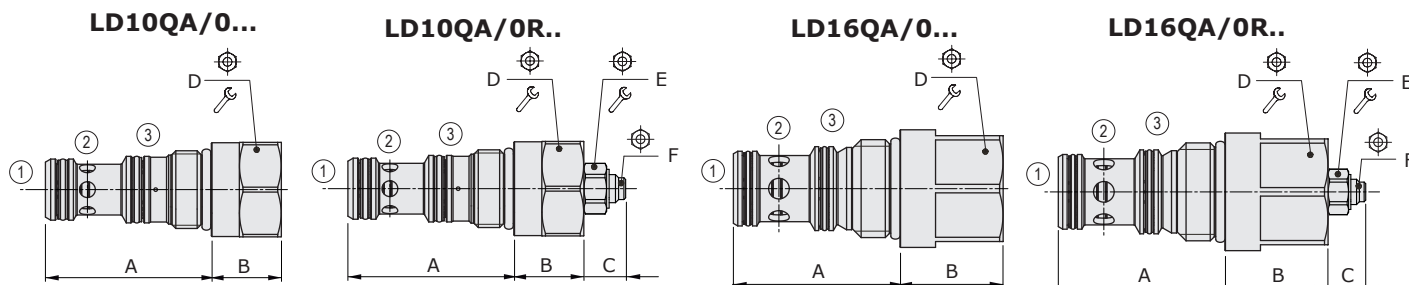
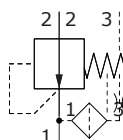
LD..QA type logic element - 3 way

- Pilot to open configurationj
- Fixed or adjustable Stand-by
- SAE10 and SAE16 cavities

Technical specifications and diagrams are measured with mineral oil of 46 cSt viscosity at 40°C (104°F) temperature.

	LD10QA	LD16QA
Nominal flow	60 l/min (16 US gpm)	150 l/min (39.6 US gpm)
Max. pressure	350 bar (5100 psi)	
Opening pressure	fixed setting: 1, 5, 10 bar (14.5, 72.5, 145 psi) adjustable setting: from 8 to 15 bar (116 to 218 psi)	
Oil leakage at 210 bar (3050 psi)	80 cm ³ /min (4.88 in ³ /min)	230 cm ³ /min (14.03 in ³ /min)
Fluid	mineral based oil	
Viscosity	10-200 cSt	
Max level of contamination	20/18/14 ISO4406	
Fluid temperature	with NBR seals with FPM seals	from -20°C (-4°F) to 80°C (176°F) from -20°C (-4°F) to 100°C (212°F)
Environmental temp. for working conditions	from -20°C (-4°F) to 50°C (122°F)	
Cavity	SAE 10/3Q	SAE 16/3Q
Weight	0.15 kg (0.33 lb)	0.45 kg (0.99 lb)

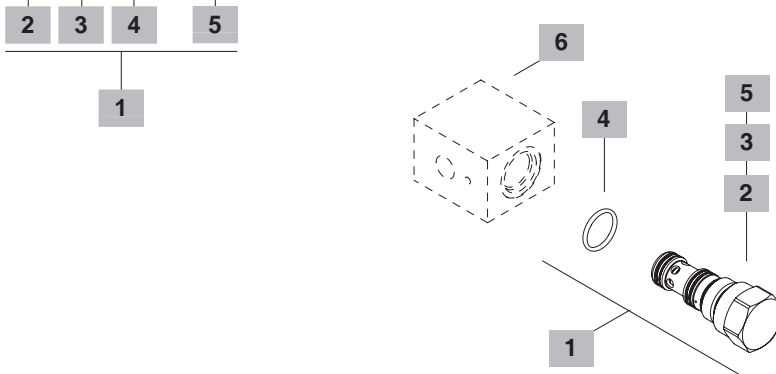
NOTE - For different conditions, please contact Walvoil Sales Dpt.



Valve type	A		B		C (max)		D			E		F	
	mm	in	mm	in	mm	in			Nm	lbft			
LD10QA	47.6	1.87	20	0.79	21	0.83	27	70	52	13	9.8	7.2	3
LD16QA	56.9	2.24	35.1	1.38	24	0.94	36	100	74	13	9.8	7.2	3

Ordering codes and description composition

LD 10QA/0 B 0 B SB=12bar



1 Cartridge		
TYPE	CODE	DESCRIPTION
SAE cavity 10/3Q		
LD10QA/0B0B	OLD10Q002000	Fixed setting, 5 bar (72.5 psi)
SAE cavity 16/3Q		
LD16QA/0B0B	OLD16Q002000	Fixed setting, 5 bar (72.5 psi)

2 Stand by	
Setting is referred to 1 l/min (0.26 US gpm) flow	
TYPE	DESCRIPTION
A	Fixed setting: 1 bar (14.5 psi)
B	Fixed setting: 5 bar (72.5 psi)
C	Fixed setting: 10 bar (145 psi)
R	Adjustable setting: from 8 to 15 bar (116 to 218 psi)

3 Lead sealing	
TYPE	DESCRIPTION
0	Without sealing
X	With sealing: for valves with adjustable stand-by only

4 Seals	
TYPE	DESCRIPTION
B	NBR (Buna) o-ring seals, std configuration
V	FPM (Viton) o-ring seals, contact Sales Dept.

5 Stand-by setting	
To be specified only with adjustable stand-by valve	

6 Valve body		
TYPE	CODE	DESCRIPTION
SAE 10/3Q-G 1/2	3CC1032D21	Steel body for cavity 08 valve, G 1/2 standard thread
SAE 16/3Q-G 3/4	3CC1632E21	Steel body for cavity 16 valve, G 3/4 standard thread
For aluminium bodies or different threading see from page 217		

Rating diagrams

