



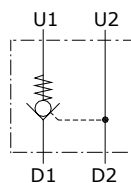
Type VBPSL/T pilot operated check valves

- Single acting

Technical specifications and diagrams are measured with mineral oil of 46 cSt viscosity at 40°C (104°F) temperature.

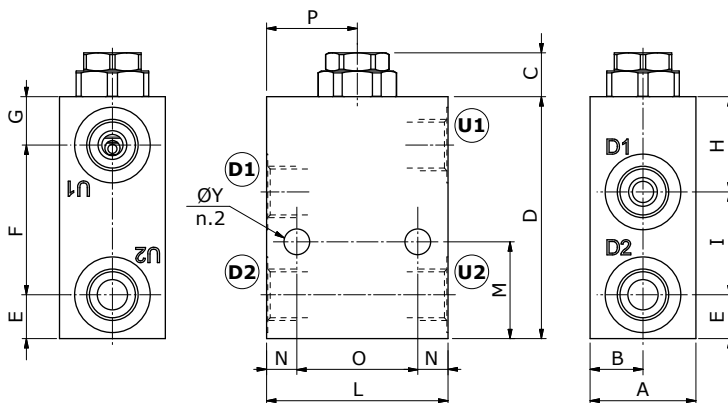
	VBPSL/T 38	VBPSL/T 12	VBPSL/T 34	
Nominal flow	25 l/min (6.6 US gpm)	50 l/min (13.2 US gpm)	100 l/min (26.4 US gpm)	
Max. pressure	Aluminium body = 210 bar (3050 psi) Steel body = 350 bar (5100 psi)			
Oil leakage	0.25 cm ³ /min (0.015 in ³ /min) at 210 bar (3050 psi)			
Fluid	mineral based oil			
Viscosity	from 10 to 200 cSt			
Max. level of contamination	18/16/13 ISO4406			
Fluid temperature	with NBR seals: from -20°C (-4°F) to 80°C (176°F)			
Environmental temp. for working conditions	from -40°C (-40°F) to 100°C (212°F)			
Weight	aluminium	0.48 kg (1.06 lb)	0.75 kg (1.65 lb)	1.79 kg (3.95 lb)
	steel	1.16 kg (2.56 lb)	1.63 kg (3.59 lb)	4.19 kg (9.24 lb)

NOTE - For different conditions, please contact Walvoil Sales Dpt.



Dimensions

Valve type	All ports
VBPSL/T 38	G3/8
VBPSL/T 12	G1/2
VBPSL/T 34	G3/4
Valve type	All ports
VBPSL/T 12/SAE	SAE10
VBPSL/T 34/SAE	SAE12

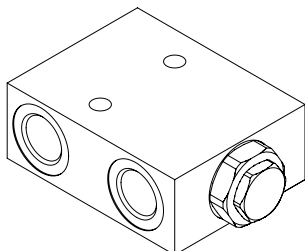


Dimensions are in mm-in

Valve type	A	B	C	D	E	F	G	H	I	L	M	N	O	P	ØY
VBPSL/T 38	35 1.38	17.5 0.69	14.5 0.57	80 3.15	14.5 0.57	49.5 1.95	16 0.63	31.5 1.24	34 1.34	60 2.36	32 1.26	10 0.39	40 1.57	20 0.79	8.5 0.33
VBPSL/T 12	35 1.38	17.5 0.69	13 0.51	90 3.54	18 0.71	51 2.01	21 0.83	38 1.50	34 1.34	70 2.75	35 1.38	15 0.59	40 1.57	20 0.79	8.5 0.33
VBPSL/T 34	50 1.97	25 0.98	16.5 0.65	135 5.31	22 0.87	83 3.27	30 1.18	57.5 2.26	55.5 2.18	90 3.54	55 2.16	20 0.79	50 1.97	25 0.98	10.5 0.41

Ordering codes and description composition

Port size — Pilot ratio
VBPSL/T 38/p4



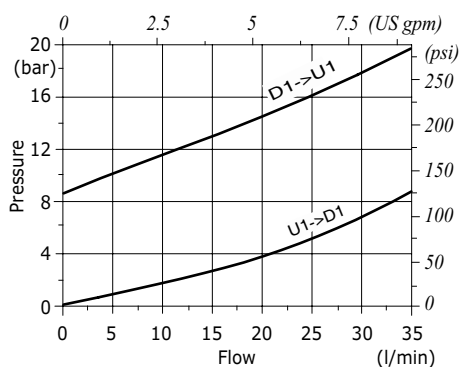
VBPSL/T complete valves

TYPE	CODE	DESCRIPTION
VBPSL/T 38/p4	1412021100	Aluminium body, pilot ratio 1:4, G3/8 ports
VBPSL/T 38/p4/ac	1412022100	Steel body, as previous one
VBPSL/T 12/p4	1412031100	Aluminium body, pilot ratio 1:4, G1/2 ports
VBPSL/T 12/p4/ac	1412032100	Steel body, as previous one
VBPSL/T 34/p4	1412041100	Aluminium body, pilot ratio 1:4, G3/4 ports
VBPSL/T 34/p4/ac	1412042101	Steel body, as previous one
VBPSL/T 12/p4/SAE	1412031200	Aluminium body, pilot ratio 1:4, SAE10 ports
VBPSL/T 34/p4/SAE	1412042200	Aluminium body, pilot ratio 1:4, SAE12 ports

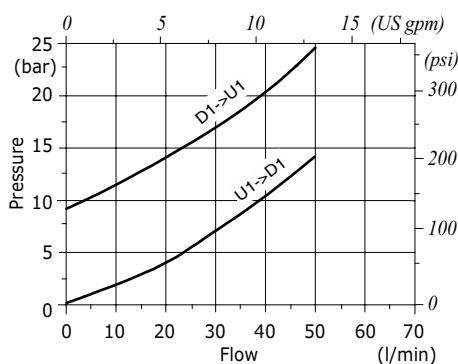
For other steel body configurations, other port sizes, SAE thread and configurations with FPM (Viton) seals, please contact our Sales Dpt.

Rating diagram

VBPSL/T 38 pressure drop vs. flow



VBPSL/T 12 pressure drop vs. flow



VBPSL/T 34 pressure drop vs. flow

