



## Type VSCOR.... flow control pressure compensated valves

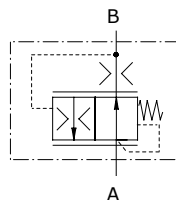
- Pop-in cartridge compensated
- Flow regulator fixed type

Technical specifications and diagrams are measured with mineral oil of 46 cSt viscosity at 40°C (104°F) temperature.

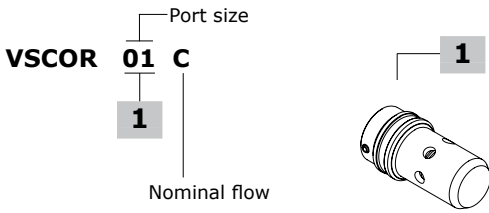
### VSCOR01..

Nominal flow from A to B	15 l/min (4.0 US gpm)
Nominal flow from B to A	10 l/min (2.6 US gpm)
Max. pressure	350 bar (5100 psi)
Fluid	mineral based oil
Viscosity	from 10 to 200 cSt
Max. level of contamination	18/16/13 ISO4406
Fluid temperature	with NBR seals from -20°C (-4°F) to 80°C (176°F)
Environmental temperature for working conditions	from -40°C (-40°F) to 100°C (212°F)
Weight	steel 0.014 kg (0.03 lb)

NOTE - For different conditions, please contact Walvoil Sales Dpt.



### Ordering codes and description composition



Nominal flow	
Type	VSCOR 01
	l/min - US gpm
A	1 - 0.26
B	2 - 0.53
C	3 - 0.79
D	4 - 1.06
E	5 - 1.32
F	6 - 1.58
G	7 - 1.85
H	8 - 2.11
I	9 - 2.38
L	10 - 2.64

#### Complete valves

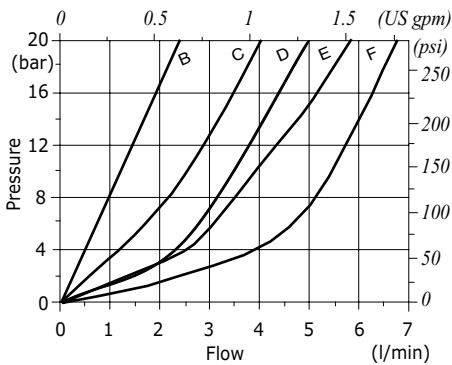
TYPE	CODE	DESCRIPTION
<b>With 01 port 12.7 mm (0.5 in)</b>		
VSCOR01A	1662010100	Nominal flow type A
VSCOR01B	1662010101	Nominal flow type B
VSCOR01C	1662010102	Nominal flow type C

For different configurations or SAE thread please contact our Sales Dpt.

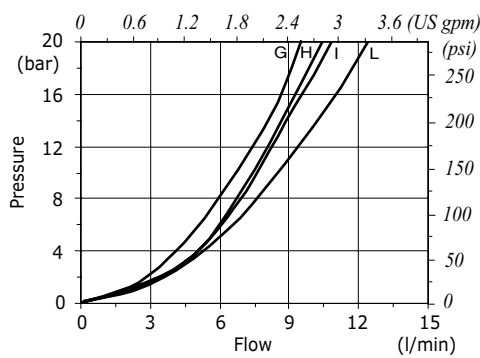
NOTE - l/min @ 50 bar - 720 psi

### Dimension

VSCOR 01 pressure drop vs. flow  
(A→B)  
B-C-D-E-F nominal flow



VSCOR 01 pressure drop vs. flow  
(A→B)  
G-H-I-L nominal flow



VSCOR 01 pressure drop vs. flow  
(B→A)  
compensation diagram

