



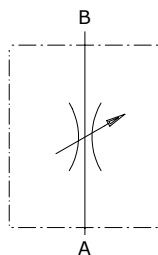
## Type VSRB needle valves

- Bidirectional

Technical specifications and diagrams are measured with mineral oil of 46 cSt viscosity at 40°C (104°F) temperature.

	<b>VSRB 14</b>	<b>VSRB 38</b>	<b>VSRB 12</b>	<b>VSRB 34</b>	<b>VSRB 100</b>	
Nominal flow from A to B	30 l/min (7.9 US gpm)	45 l/min (11.9 US gpm)	70 l/min (18.5 US gpm)	100 l/min (26.4 US gpm)	150 l/min (39.6 US gpm)	
Max. pressure	350 bar (5100 psi)	350 bar (5100 psi)	350 bar (5100 psi)	300 bar (4350 psi)	250 bar (3600 psi)	
Fluid	mineral based oil					
Viscosity	from 10 to 200 cSt					
Max. level of contamination	18/16/13 ISO4406					
Fluid temperature	with NBR seals: from -20°C (-4°F) to 80°C (176°F)					
Environmental temperature for working conditions	from -40°C (-40°F) to 100°C (212°F)					
Weight	steel	0.30 kg (0.66 lb)	0.48 kg (1.06 lb)	0.59 kg (1.3 lb)	1.34 kg (2.95 lb)	2.15 kg (4.74 lb)

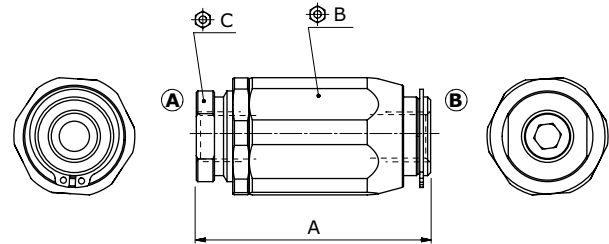
NOTE - For different conditions, please contact Walvoil Sales Dpt.



### Dimensions

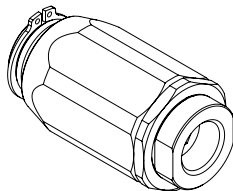
Dimensions are in mm-*in*

Valve type	All ports	A	⌀B	⌀c
<b>VSRB 14</b>	G 1/4	66-2.6	32	22
<b>VSRB 38</b>	G 3/8	77.5-3.05	38	26
<b>VSRB 12</b>	G 1/2	83-3.27	41	30
<b>VSRB 34</b>	G 3/4	104-4.09	55	38
<b>VSRB 100</b>	G 1"	118.5-4.66	65	46



### Ordering codes and description composition

Port size  
**VSRB 14**



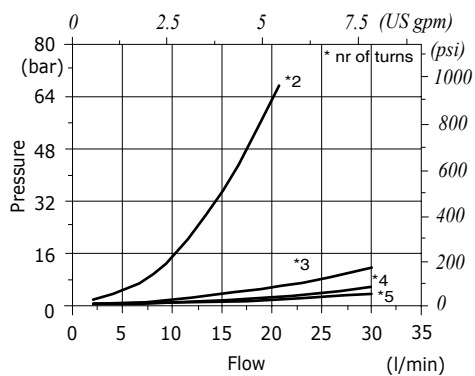
#### VSRB complete valves

TYPE	CODE	DESCRIPTION
<b>VSRB 14</b>	1603210100	Steel body, G1/4 ports
<b>VSRB 38</b>	1603220100	Steel body, G3/8 ports
<b>VSRB 12</b>	1603230100	Steel body, G1/2 ports
<b>VSRB 34</b>	1603240100	Steel body, G3/4 ports
<b>VSRB 100</b>	1603250100	Steel body, G1 ports

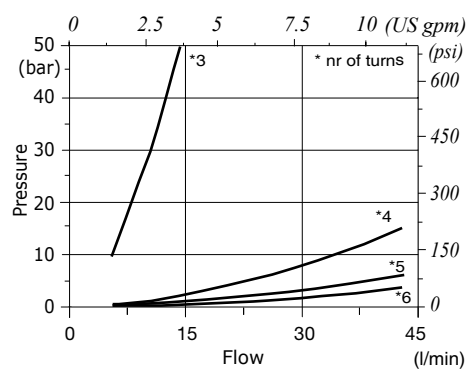
For different configurations or SAE thread please contact our Sales Dpt.

### Rating diagram

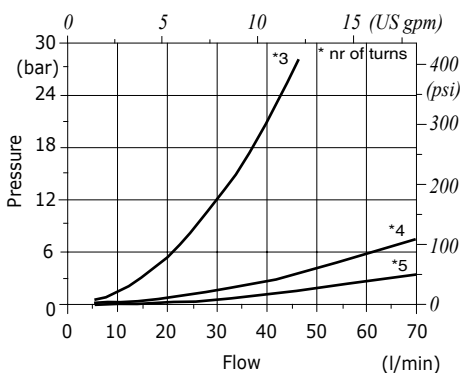
**VSRB 14 pressure drop vs. flow**



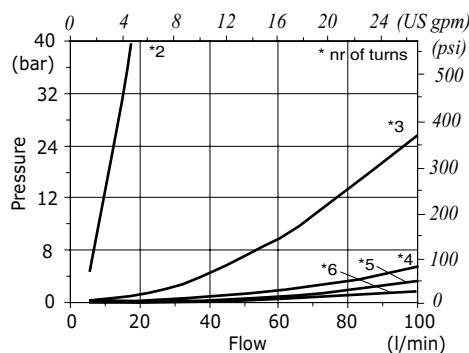
**VSRB 38 pressure drop vs. flow**



**VSRB 12 pressure drop vs. flow**



**VSRB 34 pressure drop vs. flow**



**VSRB 100 pressure drop vs. flow**

